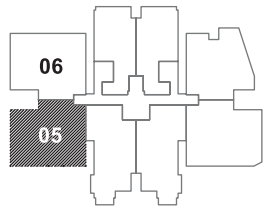
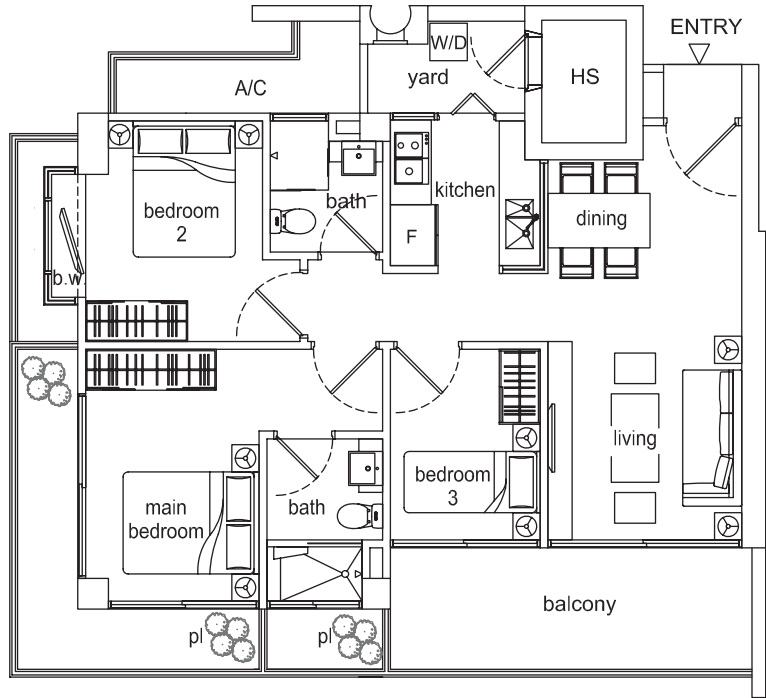
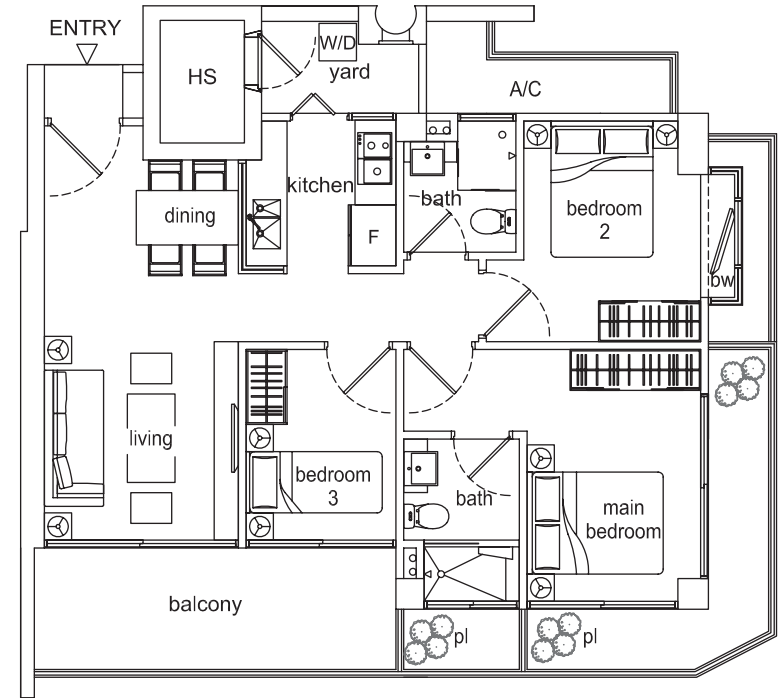
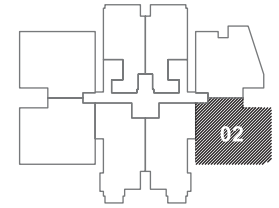


# TYPE A (3 BEDROOM)

Area 100 sq.m.  
 #02-05 - #13-05, #02-06 - #13-06  
 2nd - 13th Storey



All plans are not to scale and subject to change as may be approved by the relevant authorities.  
 Floor areas are approximate measurements only and are subject to final survey and government resurvey.



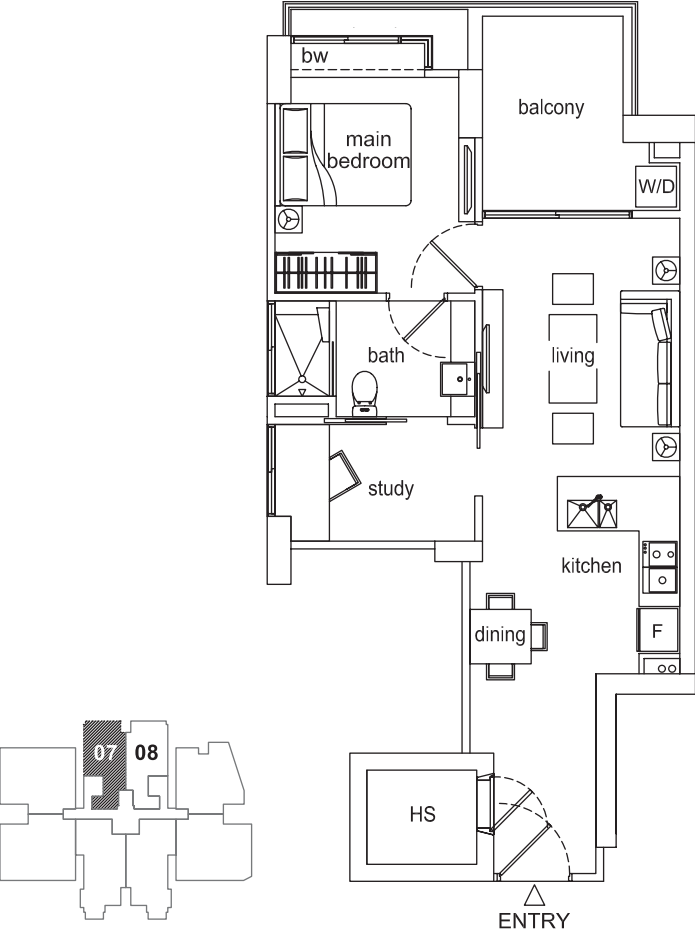
# TYPE A1 (3 BEDROOM)

Area 100 sq.m.  
 #02-02 - #13-02  
 2nd - 13th Storey



# TYPE B (1+1 BEDROOM)

Area 62 sq.m.  
 #02-07 - #26-07, #02-08 - #26-08  
 2nd - 26th Storey



All plans are not to scale and subject to change as may be approved by the relevant authorities. Floor areas are approximate measurements only and are subject to final survey and government resurvey.



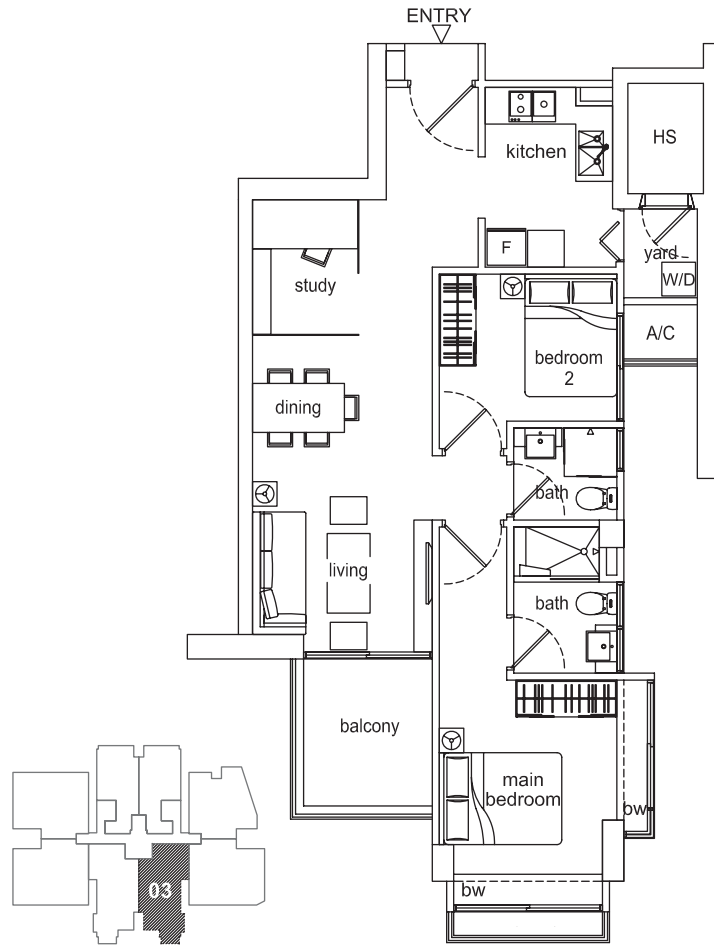
# TYPE C (2+1 BEDROOM)

Area 83 sq.m.  
 #02-04 - #26-04  
 2nd - 26th Storey

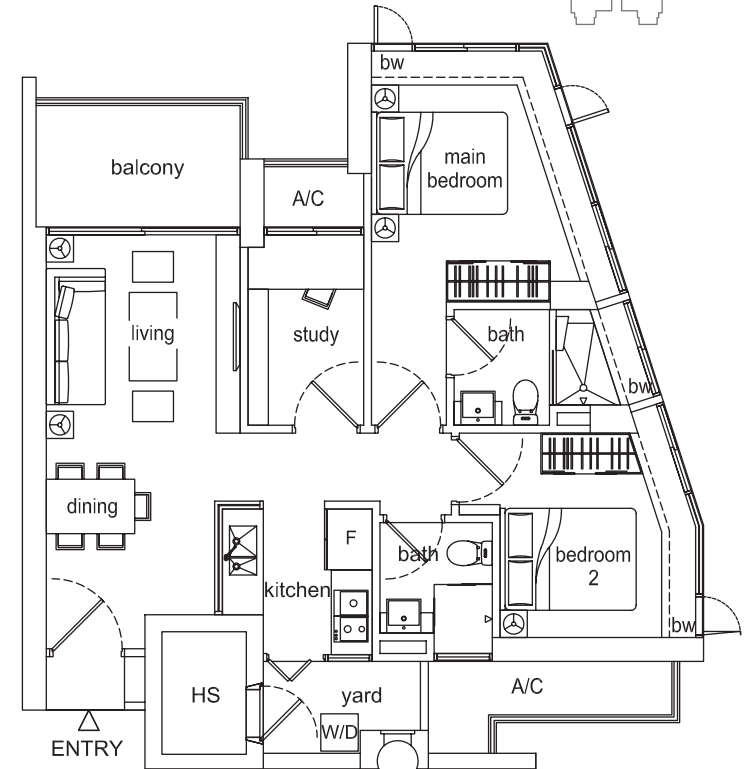
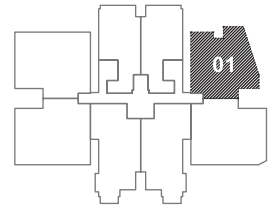


# TYPE C1 (2+1 BEDROOM)

Area 83 sq.m.  
#02-03 - #26-03  
2nd - 26th Storey



All plans are not to scale and subject to change as may be approved by the relevant authorities.  
Floor areas are approximate measurements only and are subject to final survey and government resurvey.



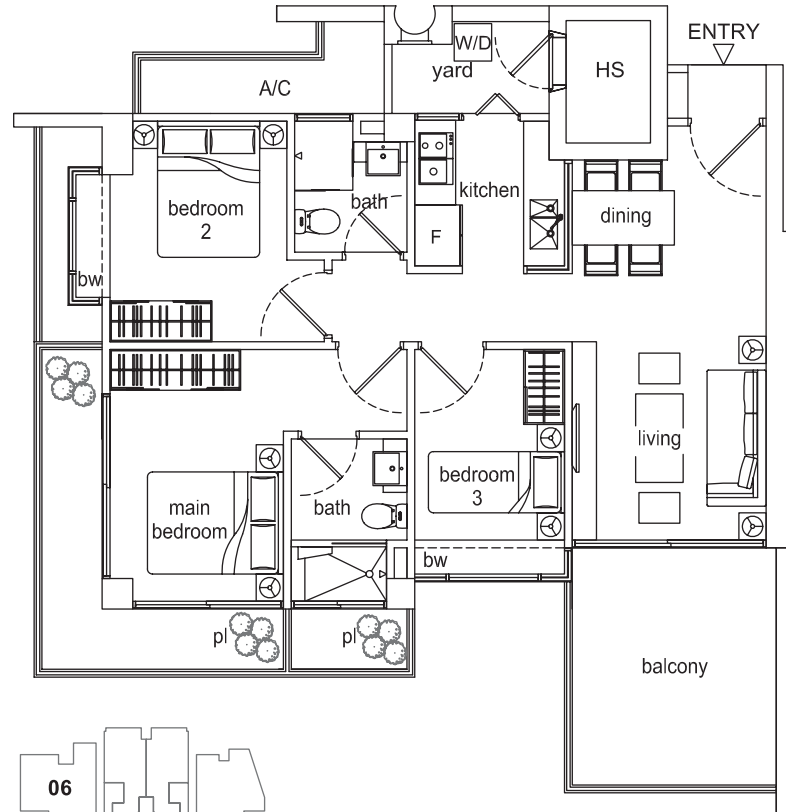
# TYPE D (2+1 BEDROOM)

Area 86 sq.m.  
#02-01 - #26-01  
2nd - 26th Storey

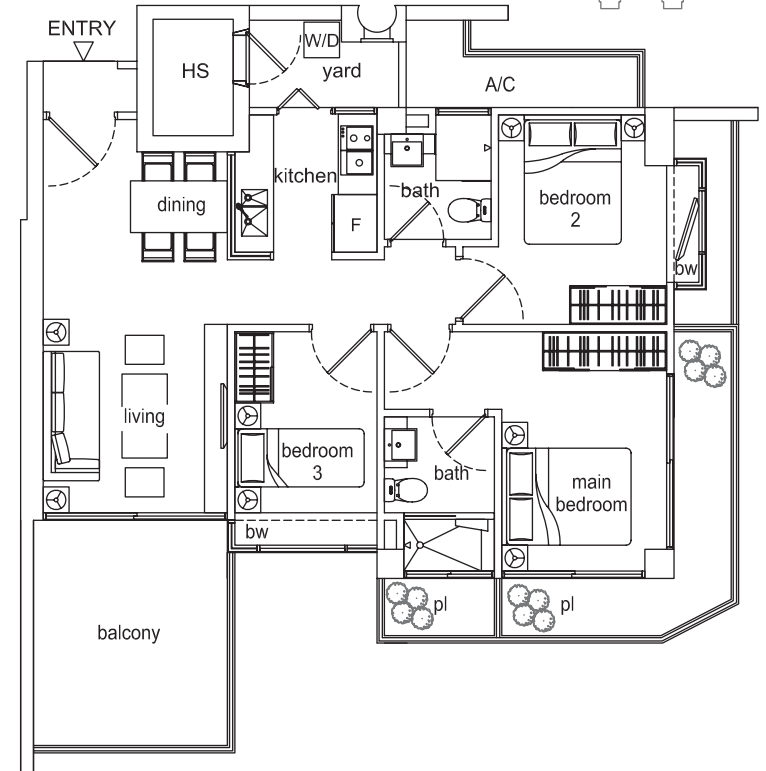


# TYPE E (3 BEDROOM)

Area 103 sq.m.  
 #14-05 - #26-05, #14-06 - #26-06  
 14th - 26th Storey



All plans are not to scale and subject to change as may be approved by the relevant authorities.  
 Floor areas are approximate measurements only and are subject to final survey and government resurvey.



# TYPE E1 (3 BEDROOM)

Area 103 sq.m.  
 #14-02 - #26-02  
 14th - 26th Storey

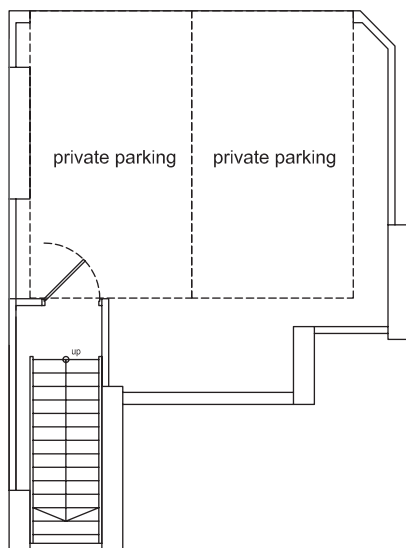


# TYPE F (2+1 BEDROOM)

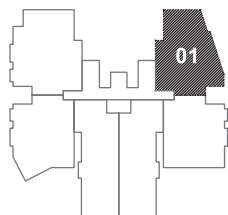
Area 187 sq.m.

#01-01

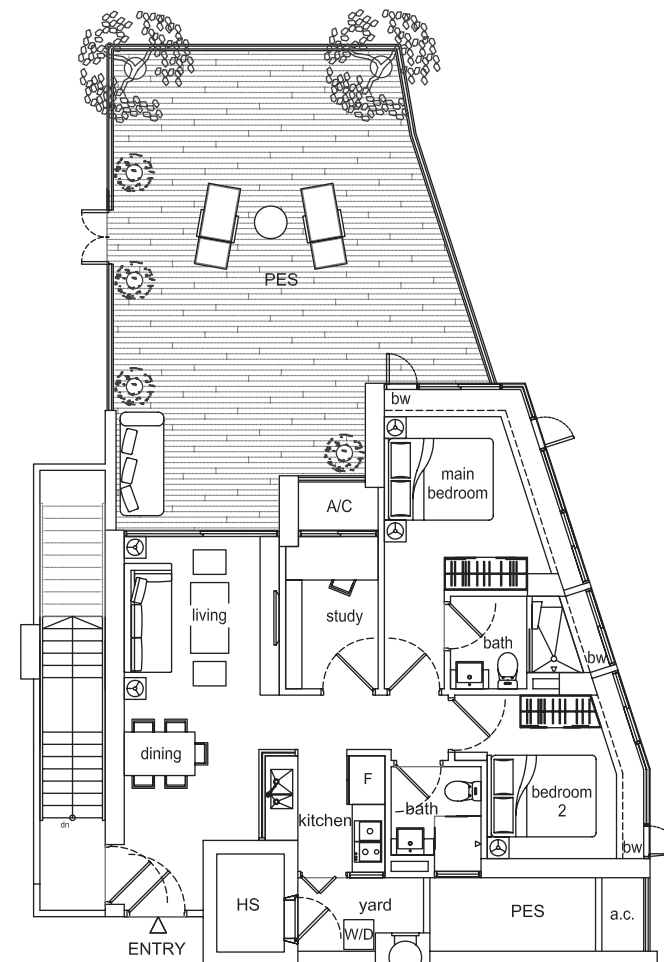
1st Storey & Basement



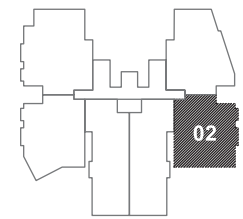
BASEMENT STOREY



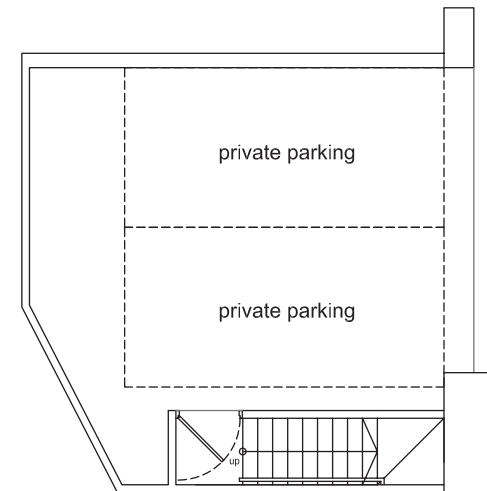
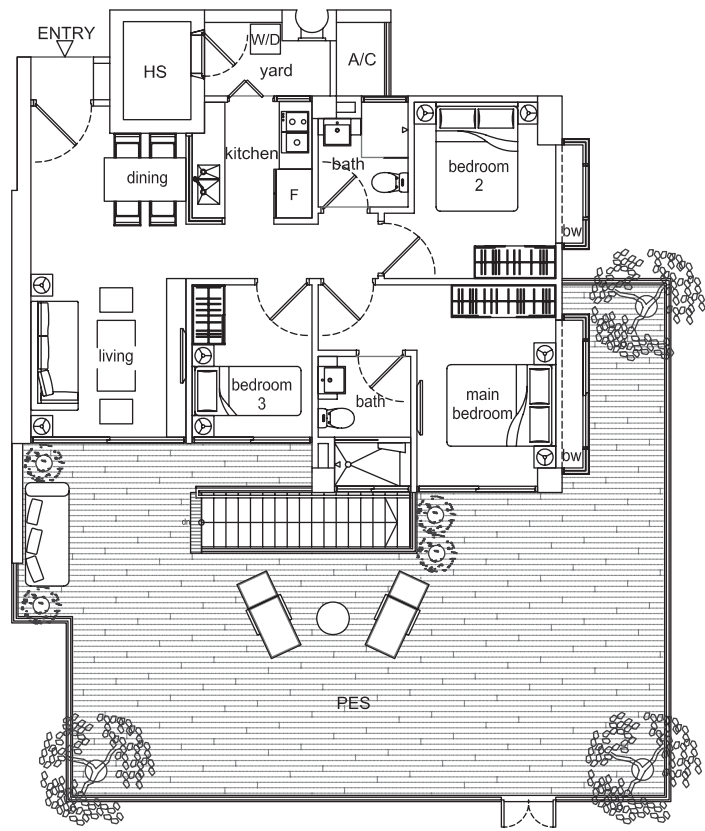
1ST STOREY



All plans are not to scale and subject to change as may be approved by the relevant authorities.  
Floor areas are approximate measurements only and are subject to final survey and government resurvey.



1ST STOREY



BASEMENT STOREY

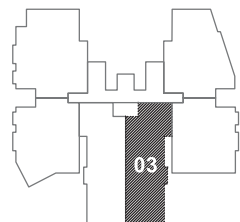
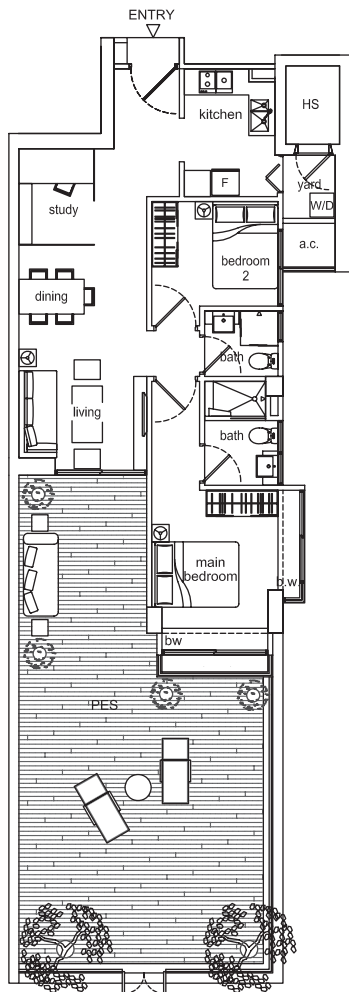
# TYPE G (3 BEDROOM)

Area 199 sq.m.  
#01-02  
1st Storey & Basement

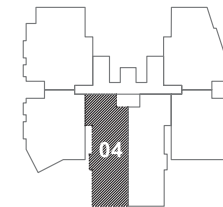
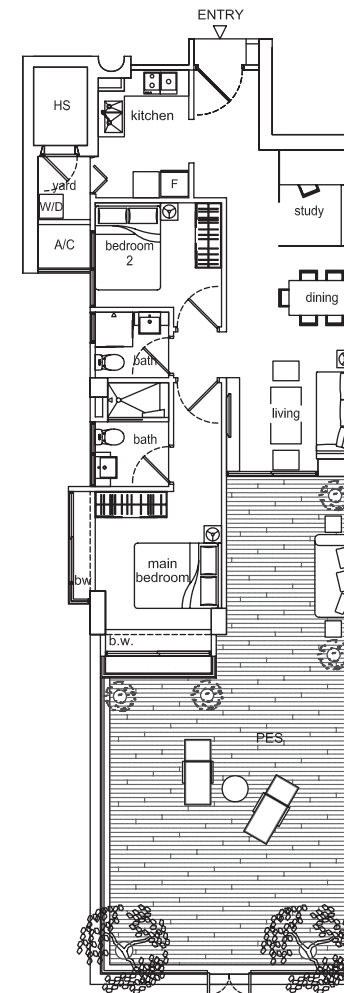
All plans are not to scale and subject to change as may be approved by the relevant authorities.  
Floor areas are approximate measurements only and are subject to final survey and government resurvey.

# TYPE H (2+1 BEDROOM)

Area 131 sq.m.  
#01-03  
1st Storey



All plans are not to scale and subject to change as may be approved by the relevant authorities.  
Floor areas are approximate measurements only and are subject to final survey and government resurvey.



# TYPE I (2+1 BEDROOM)

Area 131 sq.m.  
#01-04  
1st Storey



# TYPE J (3 BEDROOM)

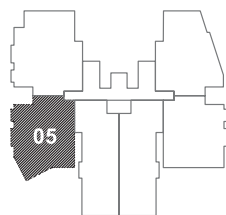
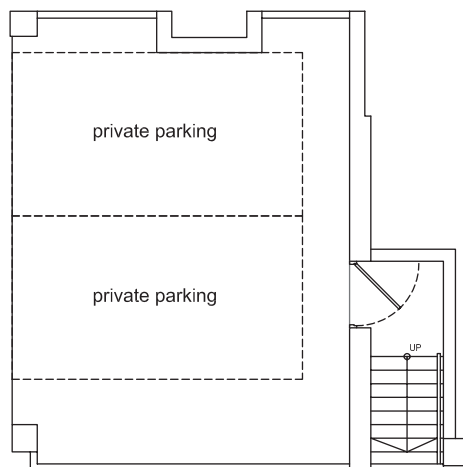
Area 169 sq.m.

#01-05

1st Storey & Basement



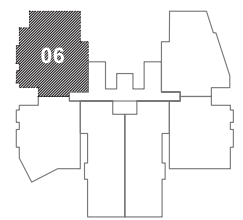
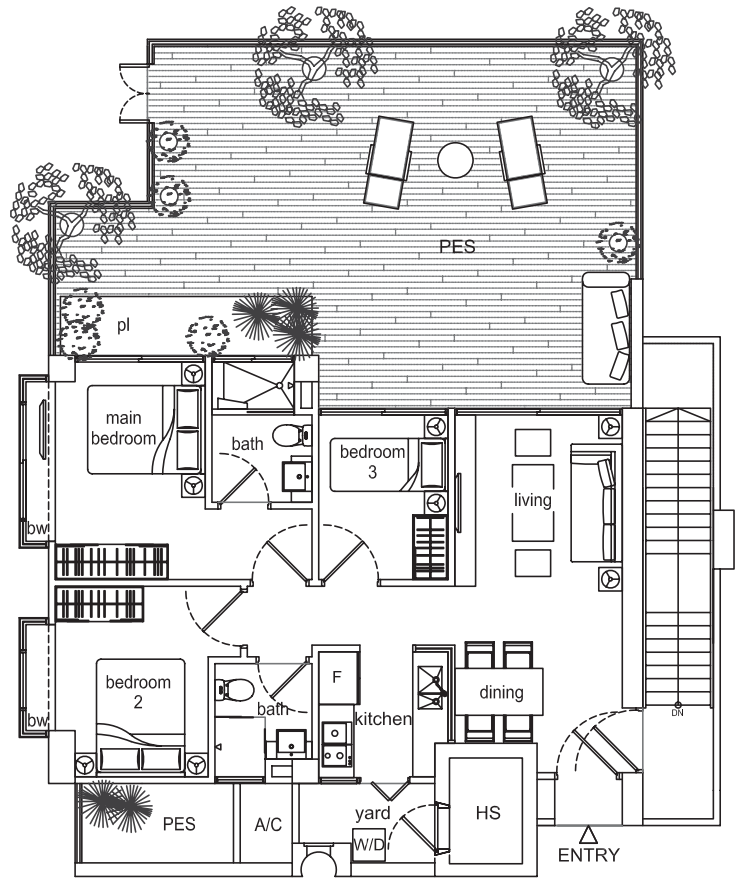
BASEMENT STOREY



All plans are not to scale and subject to change as may be approved by the relevant authorities.  
Floor areas are approximate measurements only and are subject to final survey and government resurvey.

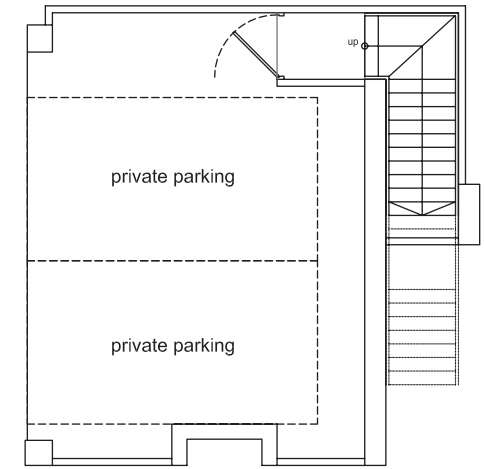


1ST STOREY



1ST STOREY

BASEMENT STOREY



# TYPE K (3 BEDROOM)



Area 193 sq.m.  
#01-06  
1st Storey & Basement

All plans are not to scale and subject to change as may be approved by the relevant authorities.  
Floor areas are approximate measurements only and are subject to final survey and government resurvey.